

University of  
Lethbridge

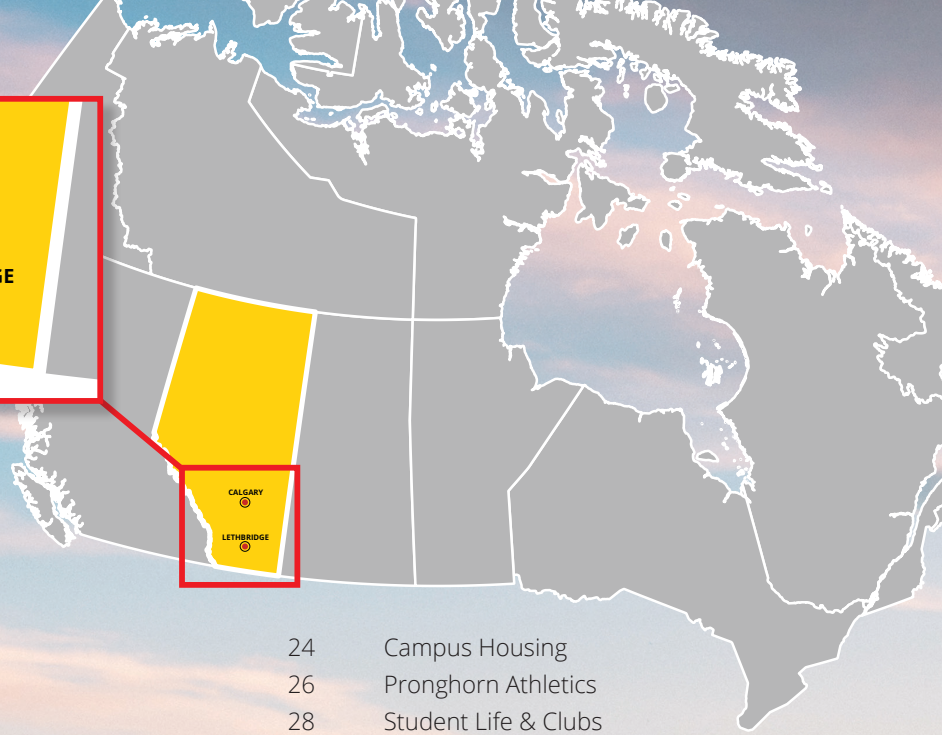


# UNIVERSITY OF LETHBRIDGE

2024/25 VIEWBOOK

[ulethbridge.ca/future-student](https://ulethbridge.ca/future-student)

Campuses in Lethbridge and Calgary



## Table of Contents

2	Why ULethbridge	24	Campus Housing
4	Career Experience	26	Pronghorn Athletics
12	Our Financial Advantage	28	Student Life & Clubs
14	Scholarships	32	Living in Lethbridge
16	ULethbridge in Calgary	34	Programs
18	Iniskim: Sacred Buffalo Stone	38	Admission Requirements
20	Your First Year at ULethbridge	40	How to Apply
22	Living and Learning Communities		





# OKI! WELCOME TO THE UNIVERSITY OF LETHBRIDGE

Experience exceptional learning, career and research opportunities surrounded by breathtaking natural beauty.

Our University's Blackfoot name is Iniskim, meaning Sacred Buffalo Stone. We are located on traditional Blackfoot Confederacy territory. We honour the Blackfoot people and their traditional ways of knowing in caring for this land, as well as all Indigenous Peoples who have helped shape and continue to strengthen our University community.

With nearly 8,400 students from 89 countries, we are large enough to deliver world-class programs, teaching and research yet small enough to provide you with a personalized student experience and all the support services you need to succeed.



# WHY ULETHBRIDGE?

---

**100% OF STUDENTS CAN  
TAKE PART IN WORK-  
INTEGRATED LEARNING  
OPPORTUNITIES**

that are recorded in your MyExperience Transcript

## SMALL CLASSES

AVERAGE 33  
STUDENTS  
PER CLASS

---

## ACCESS TO PROFESSORS

19:1 STUDENTS  
TO FACULTY

---

## TWO CAMPUSES

LETHBRIDGE AND CALGARY

## 150+ PROGRAMS

---

# 94.8% GRADUATE EMPLOYMENT RATE

Source: Latest Alberta Graduate Outcomes Survey

---



# #2

EXPERIENTIAL  
LEARNING OPPORTUNITIES  
FOR STUDENTS

Maclean's University Rankings, 2022

---

# #1 MEDICAL AND SCIENCE GRANTS IN CANADA

Maclean's 2022 and 2023 University  
Rankings (Primarily Undergraduate)

# Our University's motto is **Fiat Lux**, Latin for **"Let there be light."**

The phrase refers to the illumination that comes from learning, teaching and research and maximizing your potential to improve our community and those around the globe.

The world needs champions for innovation and creating a sustainable future, people with diverse skill sets who can work together to solve complex problems. It needs you.

**ULethbridge will prepare you for the world you will lead one day.**



## **Building an inclusive campus for all**

**Equity, Diversity and Inclusion (EDI)** are key values of our campus community at the University of Lethbridge. As members of the EDI team, our job is to create a better campus for today and the years ahead. We tackle existing barriers to build a more inclusive and supportive campus for everyone.

This work begins with every community member, as we aim to ensure you feel like you belong, regardless of background, experience or story.



*ULethbridge's first vice-provost of equity, diversity and inclusion, **Martha Mathurin-Moe** (top), with EDI project manager **Nando Ortega Arango**.*

# EXPERIENCE FOR EVERYONE



**Did you know?** ULeithbridge and Royal Alberta Museum field school at Head-Smashed-In Buffalo Jump gives students a chance to get hands-on with archaeology and uncover new insights into Alberta's Indigenous history – like discovering the site was used over 9,000 years ago!



Watch the digital story.

Take your education beyond the classroom to apply your knowledge and skills in real-world situations.

A big part of workplace success is the ability to think critically, problem-solve, communicate, get along with others, lead, research and more. Some may refer to these as soft skills, but we consider them **power skills**.

We developed the **MyExperience Transcript (MET)** so you can **track your power skills and learn how to speak about them** with future employers.

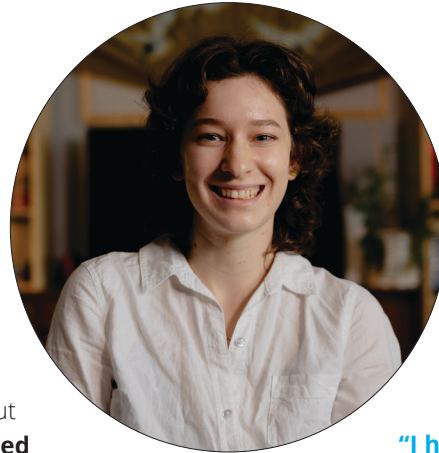
**What does MET do for you?**

The MET is a **record of your experiences on- and off-campus** and includes a variety of experiential and work-integrated learning opportunities, like workshops, certifications and volunteer

experience. These experiences aren't captured on your academic transcript, but prove **you are prepared for the world of work**.

This transcript will be used alongside your academic transcript to show your range of skills and knowledge.

**Did you know?**  
100% of ULEthbridge students can take part in work-integrated learning opportunities, that are recorded on your MyExperience Transcript!



**Dominique Marcil**  
Bachelor of Fine Arts - New Media student  
New Media major

**"I had the opportunity to research autism in women through an independent study. I dove into how things such as society's gender expectations, social status, culture, and environment can all affect how autism spectrum disorder (ASD) presents in women. My research found a common theme of ASD women being undiagnosed or misdiagnosed. My goal is to raise awareness surrounding ASD traits in women and I plan to pursue a master's degree in this area at ULEthbridge."**

**My three biggest takeaways from this research are:**

1. How important accessible communities are for minority groups in places of education.
2. It is vital to create positive and informative environments where people outside of these diverse groups feel safe enough to ask questions and learn about neurodiversity.
3. Accessible to one should mean accessible to all."



**Watch Dominique's digital story.**

**MyExperience Transcript**  
Luxie T. Pronghorn

About

+ Add Experience Filter

**Leadership** SUMMER 2020

**Student Participant**  
Summer Research Institute (2 weeks)

Participants are required to: Complete a research project over one or two summers, under the supervision of a faculty member in Schulich Med...

✔ [View](#)

**Leadership** FALL 2020

**Co-op Ambassador**  
Career Ambigo

Co-op Ambassadors play a vital role in supporting the Co-op program by promoting the services and opportunities available, enhancing the exp...

✔ [View](#)

**Leadership** SUMMER 2019

**Volunteer**  
Lets Talk Science Outreach

Volunteering is at the heart of what we do at Lets Talk Science. Our volunteer community of more than 3,500 volunteers engage and inspire students...

✔ [View](#)

**Globalization, Innovation, Research, Creativity** SUMMER 2021

**Project Sandbox - So you want to create a blog: How to use a...**

This asynchronous workshop walks participants through the process of creating and managing their own WordPress website. Participants will be...

✔ [View](#)

**Events & Workshops** FALL 2022

**Online Learning Success Series**  
Students Success Centre

Online Learning Success Series Workshop Series! Join us for our 3-part virtual workshop to improve your online learning success. Learn how to set up a...

✔ [View](#)

**Co-op Events & Workshops** FALL 2023

**Co-op Session II (CSI)**  
Co-op Events

Using the skills assessment training learned in Co-op Session 1, students will begin work on their application packages, interactively with their Co-op Advisor...

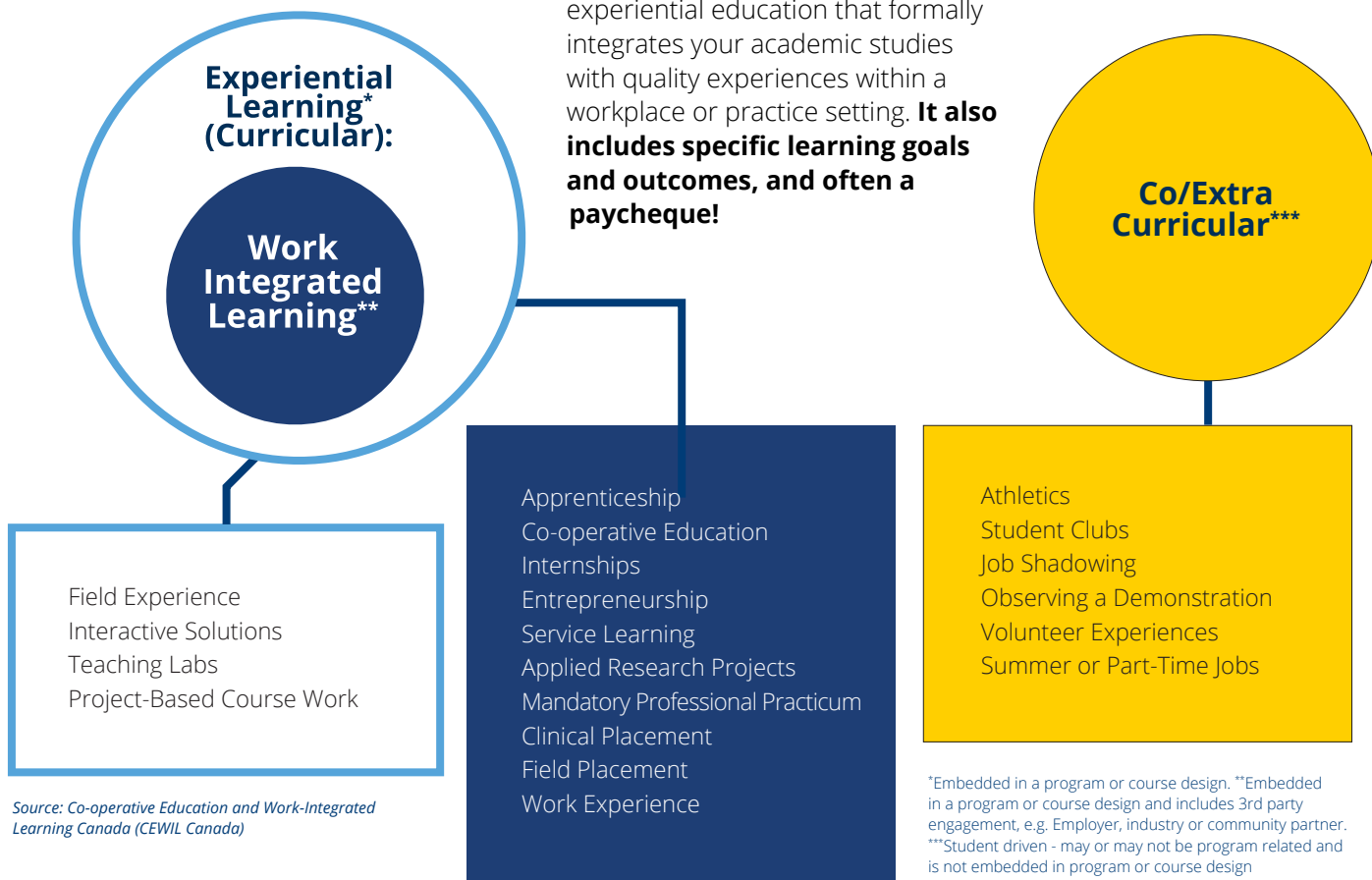
✔ [View](#)

# BRIDGE EXPERIENCES OUTSIDE THE CLASSROOM

As Canada’s job market evolves, ULethbridge will ensure you are prepared. We offer exceptional experiential learning, work-integrated learning (WIL) and career services so every student can benefit from professional development.

## What is WIL?

WIL is a form of curricular experiential education that formally integrates your academic studies with quality experiences within a workplace or practice setting. **It also includes specific learning goals and outcomes, and often a paycheck!**





## A few WIL opportunities

**Applied studies** are customized WIL courses that give students academic credit for combining work (paid or volunteer) and academic studies relevant to their program.

**Co-operative Education** is a nationally recognized form of work-integrated learning that combines professional experience with academic studies to enrich students' academic, intellectual, personal and professional development. Students alternate academic terms of study with paid work terms in a professional workplace.

**The Crooks Work-Integrated Learning Program in Liberal Education** gives students the chance to apply what they learn in the classroom to a paid work setting. Students will develop their professional skills through these practical hands-on experiences in research, volunteer or community roles with local organizations.

**Semester at Sea** is a once-in-a-lifetime chance to explore up to 15 countries in a single term. Over the course of 100-110 days, you'll learn from leading faculty and international experts, engage in hands-on field experiences, service projects at every destination and earn academic credit. The Brawn Family Foundation provides one scholarship (value:

## #2 Experiential Learning Opportunities for Students

Maclean's University Rankings, 2022  
Primarily undergraduate classification

\$24,000 CAD) per year to a ULeithbridge student to participate in Semester at Sea.

**Work2Learn** | Recognizing students' financial demands and difficulty finding part-time jobs, ULeithbridge created Work2Learn. By investing in paid WIL positions in Student Affairs, students can work on campus for five to ten hours per week for a competitive hourly rate.

**ULeithbridge Career Bridge documented a total of 181,533 work-integrated learning placement hours logged by 1,210 unique students in 2,318 different experiences during the 2022-2023 academic year!**



**"I worked as a research assistant for Dr. Michelle Hogue (MEd '04) and Ira Provost (BA '14, MA '20) along with graduate students Aspen Northwest and Emily McNeill. My three biggest takeaways from participating in this program would have to be re-connection, including Blackfoot land, culture and traditions.** This process involved learning about various plants, sacred areas, animals, rocks and ceremonies that pertain to the Blackfoot lifestyle in the Castle Park Area. After learning about these different things, our goal was to determine how to protect those elements from various things like coal mining, pollution, construction, etc. I loved how that experience made me feel more proud to be Niitsitapi and it also made me feel brave to continue my studies."

**Niihtaapookaa (Old Man River Child),  
Tatiana Weasel Moccasin**  
Pre-Bachelor of Education/  
Bachelor of Arts student  
Indigenous Studies major



Watch Tatiana's  
digital story.

# 5 CAREER MESSAGES FOR NEW STUDENTS



1

## It's ok not to know

You don't need a five or ten-year plan to be successful at university. Now's the time to learn more about yourself.

2

## Curiosity is your guide

Curiosity is a great starting place if you are unsure about your future. Start by choosing a major that genuinely interests you.

3

## Become an explorer

Explore the things you are curious about by engaging fully in the multitude of opportunities ULethbridge provides you.

4

## Collect experiences

Successful students know they need relevant experience on top of their degree. Pursue ones that help you explore your interests.

5

## Find your people

Be open to new opportunities. Being too focused can be as detrimental as having no focus.



## ULethbridge by the numbers

The average salary of ULethbridge co-op students is **\$25.77/hour**. The national average is **\$21.03**.<sup>1</sup>

**95%** of ULethbridge co-op students received positive evaluations.<sup>1</sup>

**Median income** overall for undergraduates: **\$51,525**<sup>2</sup>

**83%** said their job was related to the subject area they studied<sup>2</sup>

While some students join ULethbridge knowing exactly what they want to take and having a future career in mind, don't worry if you don't have it figured out yet.

### You will figure it out. Career Bridge at ULethbridge can help!

- Consider a career counselling appointment to explore your values and interests.
- Reflect on your life (What inspires you? How do you want to contribute to your community? Which issues are you passionate about?) Then, meet with an advisor to discuss program options that align with these interests.
- Try co-op, applied studies, independent studies, UVolunteer. Regularly check the MyExperience job board and calendar for opportunities.
- Get mentorship through co-op, join clubs with people who share your interests etc.

### Did you know?

The **ULethbridge Career Fair** is an opportunity for students and alumni to connect with employers from across the globe. It has become southern Alberta's largest hiring event, with more than 150 recruiters in attendance. We host two Career Fairs per year in September and January.

<sup>1</sup> Career Bridge WIL Annual Report 2018-19

<sup>2</sup> ULethbridge Graduate Outcomes Survey, Class of 2017/2018

# WHAT DO EMPLOYERS WANT?

What employers want is also what our society needs: thoughtful, creative thinkers and problem solvers with skills to tackle complex issues, predict the consequences of their decisions and act in the public good.

Today, there are more than 51,000 ULeithbridge alumni making positive contributions in communities around the world. Alumni Felipe Civita Ferreira (BMgt '14) and Lindsey Kapitzke (BFA '15) share how their time at ULeithbridge set them up for professional success.





**While studying at ULEthbridge, Felipe Civita Ferreira (BMgt '14) immersed himself in extracurricular activities.**

In the years since graduation, he has continued to volunteer in the community and has dedicated himself to making the world a more peaceful, equitable and inclusive place. Working in Canada's technical and vocational education

and training sector, Felipe has partnered with several Canadian post-secondary institutions to lead and support the implementation of international development projects around the world. These projects have, for example, supported eyecare services for women and girls in northern India and developed curriculum for food technology, agriculture and culinary arts programs in Kenya.

"My time at ULEthbridge shaped who I am today. Experiences such as business case competitions, going to Hungary, Malaysia and South Korea for work experiences and exchanges, working directly with professors

on independent research projects, working on campus, and making many wonderful, lifelong friends have made a profound impact on my personal and professional life. I arrived at ULEthbridge as a teenager who had recently left his home country, then graduated in 2014 as a young professional ready to take on the world."

**Felipe Civita Ferreira (BMgt '14)**  
Past Young Alumni Award Recipient,  
ULEthbridge Alumni Association



**Lindsey Kapitzke (BFA - Dramatic Arts '15) made her first foray into the film industry in 2019 and is not looking back, citing the variety of things she gets to do with the medium. Working in film keeps her career interesting.**

Lindsey worked as costume buyer on *The Last of Us*. Her role involved sourcing costume materials and working with the costume designers to bring their visions to life.

"If you think about the costumes of the show, the costume designer paints what the character is going to look like. My job as the buyer is to meet with our designer and build the palette that they're going to use to paint the show."

Making connections and learning from industry experts were some of the most positive takeaways from her time at ULEthbridge.

"ULEthbridge drama graduates are really a different calibre. Having worked in this industry for a number of years now, our grads leave this institution with the skills and abilities to accomplish great things. I feel like they're set up with such a good mindset and toolbox to start making their career what they want."

**Lindsey Kapitzke (BFA - Dramatic Arts '15)**  
Costume Buyer  
*The Last of Us*

# OUR FINANCIAL ADVANTAGE

## Dollars & common sense

ULethbridge tuition and fees are still the lowest of the comprehensive academic and research universities in Alberta for domestic undergraduate students. This is based on a typical course load for one year, five courses per semester or 10 courses over the academic year.

### Domestic Undergraduate Tuition Fee comparisons - Bachelor of Arts or equivalent

Institution	2023-24 Tuition	2023-24 Fees	2023-24 Tuition + Fees
ULethbridge	\$6,429	\$2,015	\$8,444
UAlberta	\$6,875	\$2,208	\$9,083
UCalgary	\$6,961	\$1,673	\$8,634
Athabasca U	\$6,090	\$2,323	\$8,413
Mount Royal U	\$6,624	\$2,014	\$8,638

### Average Rental Costs by City, July 2023 \*

City	1 Bedroom	2 Bedrooms	3 Bedrooms
Lethbridge	\$1,176	\$1,377	\$1,537
Calgary	\$1,764	\$2,211	\$2,618
Edmonton	\$1,216	\$1,547	\$1,697

**For information about living on campus, see page 24.**

\* Rentals.ca

Tuition information obtained from UAlberta, UCalgary, Athabasca U and Mount Royal U websites June 2023.

We work to offset the cost of tuition with scholarships and paid work-integrated learning (WIL) opportunities for students. Learn more about paid WIL opportunities on page 7.

---

IN 2022-2023,  
**48% OF NEW HIGH SCHOOL GRADS  
RECEIVED FINANCIAL AWARDS  
AVERAGING \$1,143. POST-SECONDARY  
TRANSFER STUDENTS RECEIVED AWARDS  
AVERAGING \$1,779\*.**

---

**\$1,106,883 was  
distributed  
to incoming  
undergraduate  
students in 2022-23.**

**BIG CITY LIVING,  
SMALL-TOWN  
PRICE TAG**

Turn the page for  
more on scholarships  
and awards for  
incoming students.

**Did you know?**

Lethbridge was named  
one of **Canada's Top-10  
safest cities \*\***

---

*\* This includes incoming graduate students \*\* (2023 The safest cities in Canada, Rentola)*

# SCHOLARSHIPS

We have made it as simple as possible for you to apply for scholarships and awards. **By completing our general and undergraduate awards applications, you have access to approximately 90% of the available awards at ULeithbridge!**

## Grade 11 Year

### June 30: Grade 11 Merit Award

Value: 80% and higher — \$800; 75-79.9% — \$500

- Five Grade 11 courses are used to decide the award average (English 20-1, three academics and a fifth distinct course, the same as our general admission.)
- Complete a short online form. There's no essay or letters of recommendation. Awards will be given to the highest achieving Grade 11 students.
- The online award application must be sent in your Grade 11 year.

## Grade 12 Year

### December 15: Board of Governors' Admission Scholarship

Value: 80% or higher, \$1,000

- The Board of Governors' scholarship rewards new post-secondary applicants (attending directly from high school or who have not attended any other post-secondary institutions before applying).
- This scholarship can be combined with ULeithbridge High School Awards and the Grade 11 Merit Award.
- Remember: Apply early to maximize the value of your scholarships!

### March 15: High School Awards

Value: Up to \$6,000 to qualifying students

- These awards are given to qualifying students based on criteria such as leadership, volunteerism, artistic ability, financial need and more.  
*\*Online awards application is needed.*

## Post-Secondary Transfer Awards

### June 15: Transfer Awards

Value: Up to \$1,500

- These awards are given to qualifying students (including post-diploma applicants) based on various criteria. *\*Online awards application is needed.*

## Awards for Indigenous Students\*

**Value: \$250 - \$5,000**

- ULeithbridge has 20+ awards available specifically for Indigenous students. These are based primarily on academic achievement, although other criteria may also be considered. Eligibility may vary depending on the program, year of study or Indigenous heritage. *\*Online awards application required.*

*\*All awards applications must be completed/sent through the Bridge. Use your student login at [bridge.uleth.ca](http://bridge.uleth.ca)*

**Alumni Kurt Schlachter (BSc '00) and Jason VandenHoek (BMgt '05)** have established the **VandenHoek Schlachter Pride Fund**. The \$200,000 endowment fund will support a suite of awards to help reduce barriers for 2SLGBTQ+ students.



"I have won several awards, including an NSERC (Natural Sciences and Engineering Council of Canada) scholarship, The American Chemical Society Division of Fluorine Chemistry Undergraduate Research Award and ULeithbridge scholarships and awards. They have allowed me to focus on my studies and research. The gift of time allowed me to accomplish much more than I would have been able to without these scholarships. It gave me the opportunity to create new chemical processes which will make medication and agrochemicals cheaper."

**Ty Dudas**

Bachelor of Science student  
Neuroscience major



Watch Ty's  
digital story.



Learn more about  
our scholarships  
and awards

The **ULeithbridge Board of Governors** pledged **\$10 million in match funds to create new student scholarships** and help more students succeed.

# ULETHBRIDGE IN



## Accelerate your degree

With access to courses year-round at ULEthbridge in Calgary, you can stay on track with your program, or complete your degree sooner than expected — regardless of which campus you call home.

# CALGARY

Connecting the University of Lethbridge with Calgary's East Village and the downtown core, the Calgary Campus offers flexible programs developed with the working professional in mind.

We offer face-to-face and blended instruction evenings and weekends, with some courses offered exclusively online.



**To learn more about our Calgary Campus, visit our website.**

## Something special for newly admitted high school graduates:

### University of Lethbridge/Bow Valley College Integrated Pathway

Complete a ULethbridge Bachelor of Management (General Management) degree and BVC Business Administration Diploma (Supply Chain Management) in four years. Students will take classes simultaneously through both institutions while following a shared curriculum for both credentials.

## Undergraduate Programs

Pursue a Bachelor of Management in the following majors: accounting, computer science, finance, general management, human resources & labour relations, and marketing. You can also take a Bachelor of Health Sciences in public health.\*

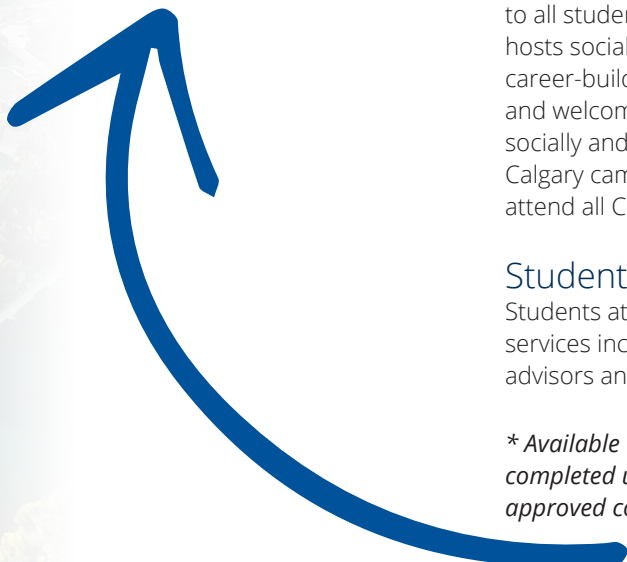
## Calgary Students' Association (CSA)

The CSA is a non-profit, student-led club available to all students on the Calgary campus. The CSA hosts social, community outreach, networking and career-building events focused on creating a fun and welcoming environment for students to grow socially and professionally. Every student at the Calgary campus is welcome and encouraged to attend all CSA events.

## Student Supports

Students at ULethbridge in Calgary have access to services including enrolment advising, academic advisors and learning supports.

*\* Available to applicants with a previously completed undergraduate degree or approved college diploma.*



A woman in traditional Blackfoot regalia, including a white and gold jacket with fringes and a large silver ornament, is smiling broadly. She is surrounded by other people in similar attire, some wearing feathered headdresses, in what appears to be an indoor cultural event or ceremony.

# OKI! WELCOME TO INISKIM SACRED BUFFALO STONE

ULethbridge pays respect to the Blackfoot people — past, present and future — while recognizing and honouring their rich cultural heritage, beliefs and relationship to the land. Our Blackfoot name is Iniskim, meaning Sacred Buffalo Stone, and was gifted to the University by Elder Bruce Wolf Child in 2002.



Since we opened our doors in 1967, Indigenous culture has been woven into the fabric of the University. Home to one of the first Indigenous Studies departments in Canada, ULeithbridge is committed to including Indigenous Peoples in our plans and actions. We continue to revitalize our curriculum and are pleased to offer Indigenous-focused majors in every area of study.

We have many spaces on campus dedicated to building community such as the Ikaisskini (Low Horn) Gathering Centre, a hub for the University's Indigenous outreach programs and events. In addition, the Tatsikiistamik Student Lounge is where students can gather, socialize and study together. Services are available for Indigenous students including several Smudge Rooms throughout campus, Elders, enrolment advising and Indigenous mentors.

### Did you know?

- The new **Indigenous Governance and Business Management (IGBM) diploma** from the Dhillon School of Business is one of only a few Indigenous business diplomas in Canada, as well as the first diploma in the country focusing on both Indigenous business and governance.
- The **Indigenous Student Success Certificate** is a first-year credit program that provides Indigenous students an opportunity to enter into, and succeed at, university.
- One of Canada's most respected Indigenous academic leaders, Dr. Leroy Little Bear (BASC (BA) '72, DASC '04), has been appointed Vice-Provost, Iniskim Indigenous Relations.



Learn more about opportunities at Iniskim.



# HELPING STUDENTS FLOURISH

Your first year at university will be an exciting adventure, but it won't always be easy.



When adjusting to university life, you may doubt yourself, feel lonely and encounter challenges. Reality check: It's totally normal to feel this way! Growth can be uncomfortable at times, but it doesn't last forever.

**Here's proof: A model called the W-Curve\* (see diagram on the left) was developed in the 1960s to map out the culture shock in transitioning to university.**

**1. Honeymoon** | Excitement about being in a new place, a sense of freedom

**2. Culture Shock** | Classes start, differing expectations and teaching styles of instructors, differing

values of home vs classmates and roommates, new processes to learn, may start to feel lonely

**3. Initial Adjustment** | Start to figure things out, gain confidence, meet people outside of class, develop a routine

**4. Encountering Challenges** | May question where you belong, conflicts with roommates, homesickness gets real

**5. Acceptance and Integration**

Get more involved on campus, develop strong ties with students, faculty and staff, and feel at home on campus

**Now that you know what to expect, you can prepare for the journey. We'll be right beside you every step of the way!**

We're here to support you throughout your time at ULEthbridge, so don't hesitate to ask for help. University staff and faculty want you to succeed in your program and life; we all need help now and again.

**Here are a few of our newest initiatives to support your successful transition to university:**

### StartSmart Quiz

This voluntary quiz is sent to incoming students in August. It's a way to highlight your areas for growth and connect you with the ULEthbridge services that will prepare you for success. The questions are related to areas such as academic habits, financial preparedness, stress management and more.

### Student Wellness Ambassadors Program (SWAP)

Developed for students by students, the Student Wellness Ambassador Program (SWAP) promotes student engagement and wellness. The SWAP students

are trained peer listeners and plan events for students to connect, feel supported and improve their overall wellness.

### R.E.C. (Refresh, Energize, Connect) Rooms

The REC (Refresh, Energize, Connect) Rooms are multi-site campus hubs that invite students to step away from the stress of study and research to meet new people, connect and relax.

The spaces offer areas for chatting or zoning out, engaging in quiet pursuits like VR games, puzzles, giant chess and art hives, and active games like ping pong, foosball and more!

### Food for Thought and Nourish

Food for Thought and Nourish address student food insecurity head-on. These include food pantries across campus, fresh food boxes, campus care parcels, breakfast giveaways and a community garden.



**For a robust list of our student supports, including the best time to connect to services, visit the website.**

*\* Gullahorn and Gullahorn (1963)*

# LIVING & LEARNING COMMUNITIES

A living and learning community is just that: a group of students who take classes and attend events together while working toward a common goal. Some participants do live in residence, but it's not mandatory in the living and learning communities.

## Early Start Experience (ESE)

Take a liberal education course for full credit **before** the start of the Fall 2024 term! What is liberal education? It teaches you how to think critically, solve problems and become a global citizen. The ESE is open to ULEthbridge students in all bachelor's

degree programs. Students who live off-campus can still take part.

The ESE promotes success and eases the transition from high school to university while giving you credit for your degree. You'll get to know the Lethbridge campus, meet fellow

students and your professors, and learn about our resources.



Learn more about ESE.



### Career Kickstart Cohort (CKC)

The CKC will help you maximize your studies and career-building opportunities at ULEthbridge. There are several milestones to achieve as a university student before leveraging your studies and experiences into a fulfilling career.

Access career and professional development activities as well as experiential and work-integrated learning opportunities. Discover unknown skills and passions, learn about meaningful career options and challenge yourself to explore new interests and intersections between work, life and learning.



### Dhillon School of Business Edge (DSB Edge)

DSB Edge is for students enrolled in a Bachelor of Management and joining ULEthbridge directly from high school. As part of DSB Edge, you'll have a built-in community that enhances academic performance and social success. You'll make friends, find study partners, develop resilience and fine-tune your interpersonal skills.

Gain exclusive access to a special DSB Edge student orientation, leadership development opportunities, networking events and other student activities. Most importantly, you will be a part of a tight-knit community of business-minded students.



## Did you know?

If you apply to any of our living and learning communities by the deadline and pay your deposits, **you are guaranteed a bed in residence!**



### Josh McNeil

Bachelor of Science student  
Chemistry major  
Prairie Baseball Academy catcher

"I would recommend the Early Start Experience (ESE) to anyone because it allows you to meet a lot of other students just starting at the university. Another reason is third and fourth-year students co-teach and are there to help you run projects and adjust to the university atmosphere. It was helpful because I couldn't write an essay to save my life.

My favourite thing about the ESE was our scavenger hunt. It was just super cool. It helped you learn where everything is at the university, all the important stuff, the deans' offices, the library and many other resources."



Watch Josh's  
digital story.

# LIVING ON CAMPUS



Welcome to your home away from home!

Living on campus is about building community and sharing experiences — essential for a smooth transition to university.

Living on campus is a great option, especially during your first year. While all students are welcome to apply, priority for on-campus housing is given to non-local students.

Studies show that students who live on campus are more likely to have a successful academic experience. Your home is within a 10-minute walk away from your classes, computer labs, food services, gym facilities, the library and study spaces.

## What is included?

- Utilities
- High-speed internet
- Emergency landline
- Fully furnished rooms
- Study rooms
- Communal areas with entertainment options
- 24/7 on-call assistance

Residents belong to the largest student club on campus, the Organization of Residence Students (ORS). Each floor in housing has residence assistants (RAs) who build community by coordinating events and study sessions.

Our RAs are trained in emergency response, psychological first aid, and standard first aid. They also uphold community standards, help with roommate disagreements, and will connect you to ULethbridge services.

**What our students say about Residence:**

**91%** Reported that they were satisfied or very satisfied living in Campus Housing

**96%** Say that they felt safe or very safe and secure living in Housing

**88%** Reported that living in Housing had a positive or very positive impact on their transition to university

**92%** Would likely or very likely recommend living in Housing to friends / new students



**Want to see our Residences for yourself? Take a virtual tour!**

## Campus Safety

Your safety is our priority. Personalized electronic key fobs ensure only you have access to your room. Buildings have Closed-Circuit televisions in public areas and are regularly patrolled by Security Services.

## Apply for On-Campus Housing

Apply early since on-campus housing is not guaranteed and is in high demand. **Applications open September 15 for the following academic year.** You can apply for housing once you have received your student identification number. You do not have to be accepted to ULethbridge to apply for on-campus housing.

### You are considered a New University student if you:

Enter straight from high school or take less than one year off following high school.

Apply online to stay in the traditional-style dorms in University Hall (UHall) or one-, two-, four, or six-bedroom apartments in Kainai House or Piikani House.

### You are considered a Transfer or Mature student if you:

Enter after studying at another post-secondary institution, or take two or more years off following high school.

You can apply online to live in a studio or four-bedroom apartment in Mount Blakiston House, two- or four-bedroom townhomes in Siksika and Tsuu T'ina House townhomes, or a four-bedroom in The Village townhomes.

## What's in a name?

To honour our relationships with local Indigenous communities, housing developments are named Kainai, Piikani, Siksika and Tsuu T'ina.



To learn more about Housing and to apply



### Dining Plans

Living away from home for the first time is an exciting journey; with a dining plan, your transition to university is supported by having convenient access to nutritious meals. The best part? You won't have to do the dishes!

**New University students living on-campus must buy a Commuter or Standard dining plan (8-month contract).**

Commuter (light appetite) from \$4,300 and Standard (hearty appetite) from \$4,990.

Need more funds? You can add money to your plan throughout the year.

**Transfer or mature students don't have to buy a dining plan,** but it's an excellent choice! You can buy an optional dining plan and have the choice to choose the Commuter Plan, Standard Plan or Sampler Plan.



Learn more about our dining plans.

### Parking On Campus



Designated resident parking is available to all residents upon online check-in.

### Off-Campus Housing Registry



Want to live off campus? One of the benefits of living in a student-oriented city is that

Lethbridge has extensive off-campus housing options nearby. ULethbridge has a list of non-University off-campus housing options available to help students find rental accommodations in Lethbridge.



# THIS IS PRONGHORN COUNTRY



## Pronghorn Varsity Teams

### **Basketball**

(men's and women's teams)

**Rugby** (women's fifteen and sevens teams)

**Soccer** (men's and women's teams)

**Swimming** (combined team)

**Track and field** (combined team)

## Competitive Clubs

**Curling** (men's and women's teams)

**Golf** (men's and women's teams)

**Ringette** (women's team)

**Softball** (men's and women's teams)

**Wrestling** (men's and women's teams)

Coaches recruit the majority of Pronghorn student athletes prior to the start of the season. However, each varsity team will hold an open try-out in the weeks leading up to their season. Visit [gohorns.ca](http://gohorns.ca) to see the schedule and to get in contact with a Pronghorn coach.

## 2022-2023 Pronghorn Highlights

- Pronghorn Athletics hosted Canada West Swimming Championships, bringing a full house to the Max Bell Regional Aquatic Centre. In front of the home crowd, Apollo Hess was named Swimmer of the Meet and Peter Schori was recognized as Coach of the Year.
- Chris Alexander brought home U SPORTS gold for the Pronghorns, winning the 50m backstroke at the 2023 U SPORTS Swimming Championships in Victoria, BC. Apollo Hess was back on the podium for a second straight year, as he swam for bronze in the 50m and 100m breaststroke.
- Pronghorn track and field athlete Andreas Troschke was named Canada West Champion in men's weight throw for the third consecutive year. At the same time, Jinaye Shomachuk garnered the women's weight throw champion title. On the national stage, Horns earned a medal of every colour at U SPORTS Track and Field Championships. Jinaye Shomachuk took home gold in women's weight throw, Andreas Troschke earned silver in men's weight throw, and Lauchlan Irish earned bronze in men's triple jump.
- Pronghorn student-athletes continue to be demonstrated leaders on and off the field. Karlee Durfey was named Canada West and U SPORTS Student-Athlete Community Service Award recipient for her work in starting the charitable organization Bo Smith and Co. to raise money for children battling cancer.



### New Curling Coach!

Pronghorn Athletics proudly announces multiple Grand Slam winner Casey Scheidegger as the next head coach for the Pronghorn men's & women's curling programs. Scheidegger will lead the 2023/2024 return to Canada West & U SPORTS competition.

Some highlights of Casey's remarkable career include several Grand Slam Titles, including the Canadian Open Championship, the Player's Championship and the Tour Challenge. She has also represented Alberta at multiple Scotties Tournament of Hearts.



"Because of basketball, I started my journey at Gonzaga University in Spokane, Washington, for two years. When I looked to transfer, the University of Lethbridge – in my hometown, playing for the Pronghorns – was the only place I considered because the Faculty of Education is so highly regarded. The ability to work with instructors who are both knowledgeable and passionate about their job has made my choice to stay in my hometown an easy one.

Balancing training with school has been hard, but both have taught me that the recipe for success is resilience, time management and asking for help when needed."

#### **Kacie Bosch (BA '16)**

Bachelor of Education student  
Pronghorns Women's Basketball Assistant Coach  
Canada's 3x3 Women's National Women's Basketball Team



Watch Kacie's digital story.

# STUDENT LIFE & CLUBS

With student club events, fine arts productions, cultural celebrations, athletic activities and just hanging out with friends, campus is bustling all year long.



## The Herd

Show your Pronghorn pride. Join the Herd, a student-led spirit squad that passionately supports our teams throughout the year. Meet new people, gain free admission to every Pronghorns game and cheer on our teams. Go Horns!

## Stay fit, have fun!

We have many opportunities for students to participate in recreational activities like fencing, karate, fitness classes and wellness programs. There are also several intramural programs to choose from, including favourites like dodge ball, floor hockey and Ultimate Frisbee.

## Intramurals

There are also several co-ed intramural teams to choose from, including favourites like basketball, Dodgeball, e-sports, flag football, floor hockey, ice hockey, indoor soccer and volleyball.

[ulethbridge.ca/sportrec/intramurals](http://ulethbridge.ca/sportrec/intramurals)

## Prairie

### Baseball Academy

With a partnership that's nearly 30-years strong, we are proud to be associated with one of the best baseball academies in Canada. The PBA attracts players from across Canada.

[prairiebaseball.ca](http://prairiebaseball.ca)

## University of Lethbridge Students' Union (ULSU)

The ULethbridge Students' Union is your voice at the University and at all levels of government. It also provides student health and dental plans in addition to organizing some of the best events of the year — cabarets and karaoke at the Zoo (our campus pub), Fresh Fest and various awareness weeks to name a few!

Any student can run for an executive or representative position.

[ulsu.ca](http://ulsu.ca)

## Student clubs

Whether dance, business, model UN, program-based groups, or other interests, student clubs are the best way to get involved and have fun outside of class hours. There are nearly 100 student clubs on campus that provide social and athletic activities, travel, religious fellowship, and charitable and cultural support. If the club you want doesn't exist, it's easy to start one!

[clubs.ulsu.ca](http://clubs.ulsu.ca)

## Ankit Mukherjee

Bachelor of Management student  
Finance major | ULSU, Dhillon School  
of Business Representative

"Get involved on campus as much as possible. There are countless opportunities to get involved with student organizations, clubs and events. Doing so lets you meet new people, develop new skills and make the most of your university experience. Whether volunteering, joining a sports team or taking part in a club that aligns with your interests, there's something for everyone at ULethbridge. Don't be afraid to step out of your comfort zone and try something new. University is a time for growth and exploration, so make the most of it and get involved!"



Watch Ankit's  
digital story.

“Take your time and soak up every moment. University is not a race. It’s not about when you finish but how you finish, and the memories made along the way. Take full advantage of the liberal education experience, as it will help prepare you for the outside world and work life. Lastly, get involved. Whether you’re volunteering or joining a club or student government, ULethbridge offers a bit of everything, so find what works for you.”

**Maleeka Thomas**

Bachelor of Arts student  
Sociology major | ULSU President



Watch Maleeka's  
digital story



**Meet your future life-long friends even before you start classes.** Attending student orientation events like **Ahead of the Herd** and **New Student Orientation** makes it easy to make friends before you start classes.



### **Ahead of the Herd (AOTH)**

Tailored to incoming students and their families. This event is primarily for new students to connect and get to know one another in a low-stakes environment. You'll get to know the campus and learn about our student supports.

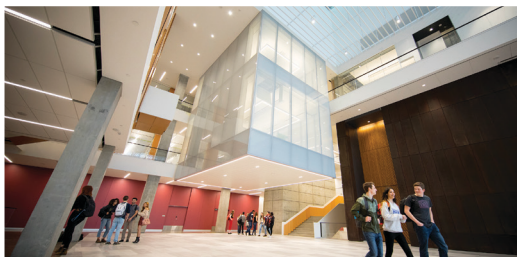
### **New Student Orientation**

Learn about the ins and outs of being a student right before classes start. Find out who to ask for support in your courses and out and learn about the academic expectations of being a first-year student. You'll meet the professors and staff who will be a resource for you throughout your time with us and get great tips and advice from current students.

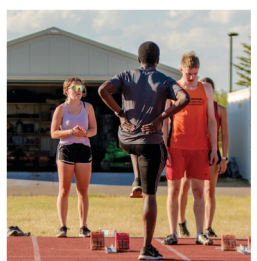
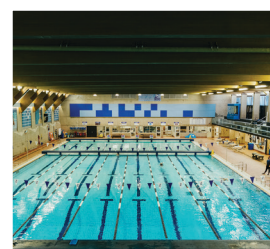
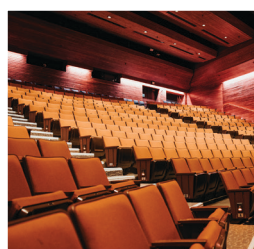
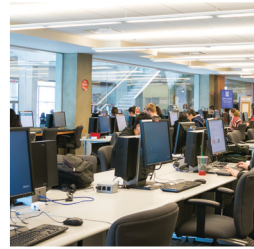
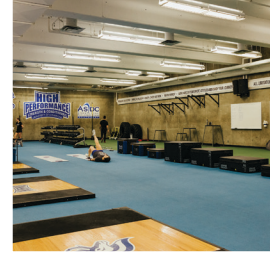
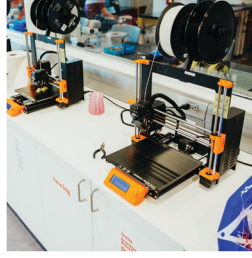
# SPACES AND PLACES



Where you learn shapes how you learn. Whatever your program, our world-class facilities will inspire you.







# EXPERIENCE LETHBRIDGE



Lethbridge is in the perfect location: where the Rocky Mountains meet the Alberta Prairies, surrounded by big skies and plenty of sunshine! It's also close to national and provincial parks, world-class skiing, hiking and cultural attractions.

With a population of more than 100,000, Lethbridge has big city opportunities like a flourishing arts and entertainment scene, a thriving community calendar and excellent sporting facilities.

### Just a few things to do in Lethbridge:

- Take an electric scooter or bike across the entire city
- Go walking or running in the coulees
- Catch a band at one of several music venues in the city
- Shop or dine at one of 40+ locations downtown offering ULethbridge student discounts
- Watch a drive-in movie at the Movie Mill
- Get your culture on at SAAG, Casa, Nikka Yuko Japanese Gardens, or the Galt Museum
- Experience nature at the Helen Schuler Nature Centre or visit the turtles at the Elizabeth Hall Wetlands

Play golf at one of five courses or disc golf at one of four courses in Lethbridge — including on our campus!



**Want to learn more?  
Visit Tourism Lethbridge.**



**Lethbridge is only two hours from Calgary's International Airport** and about an hour to the United States border (by car).



With the Rocky Mountains in our backyard, there are fantastic hiking, biking and skiing opportunities close by.

# DEGREES, PROGRAMS & ADMISSION INFORMATION

We offer more than 150 programs at ULEthbridge.

It is important that you explore your interests to find a program that aligns with your interests, values and skills. Our liberal education requirements are structured so the courses you take in your first year will apply to any of our degrees!

<b>Bachelor of Arts</b> <small>(BASC, 40-course, or Second Degree)</small>
Agricultural Studies <sup>1,6</sup>
Anthropology
Archaeology and Geography
Art <sup>2</sup>
Dramatic Arts <sup>2</sup>
Economics <sup>3,6</sup>
English
French
French/Spanish
General Major in the Humanities
General Major in the Social Sciences
Geography <sup>1</sup>
History
Kinesiology <sup>1</sup>
Music <sup>4</sup>
Indigenous Studies
Philosophy
Political Science <sup>3</sup>
Psychology <sup>1</sup>
Religious Studies
Sociology
Urban and Regional Studies
Women and Gender Studies

<b>Bachelor of Education</b> <small>(Second Degree or Combined Degrees programs only)</small>
Art Education <sup>8</sup>
Career and Technology Studies <sup>8</sup> CTS: Business Focus CTS: New Media Focus
Drama Education <sup>8</sup>
English Language Arts Education <sup>8</sup>
Mathematics Education <sup>8</sup>
Modern Languages Education <sup>8</sup> French French / Spanish
Music Education <sup>8</sup>
Indigenous Education <sup>8</sup>
Physical Education <sup>8</sup>
Science Education <sup>8</sup>
Social Studies Education <sup>8</sup>
Early Years <sup>9,10</sup>

<b>Bachelor of Management</b> <small>(40-course or Second Degree)</small>
Accounting <sup>6</sup>
Computer Science <sup>1,6</sup>
Economics <sup>5,6</sup>
Finance <sup>6</sup>
Indigenous Governance and Business Management <sup>6</sup>
General Management <sup>6</sup>
Human Resource Management and Labour Relations <sup>6</sup>
International Management <sup>6</sup>
Marketing <sup>6</sup>
Political Science <sup>5,6</sup>
BVC Integrated Pathway (See pg. 17)

<b>Bachelors of Fine Arts</b>
Bachelor of Fine Arts - Art <sup>5</sup>
Art History / Museum Studies
Art Studio
Bachelor of Fine Arts - Dramatic Arts <sup>5</sup>
Performance
Technical / Design
Bachelor of Fine Arts - New Media
Bachelor of Fine Arts - Multidisciplinary
Bachelor of Fine Arts - Indigenous Art
Art History / Museum Studies
Art Studio

<b>Bachelor of Music</b>
Music <sup>5,6</sup>
Digital Audio Arts

<b>Bachelor of Health Sciences</b>
Aboriginal Health <sup>6</sup>
Addictions Counselling <sup>6</sup>
Public Health <sup>6</sup>

<b>Bachelor of Nursing</b>
Nursing <sup>6,7</sup>

As a comprehensive university, ULEthbridge offers a number of programs at the graduate level. If you are interested in learning more about our School of Graduate Studies, please visit [ulethbridge.ca/graduate-studies](http://ulethbridge.ca/graduate-studies).

Combined degrees are a way of diversifying both your knowledge base and skill set. While most degrees require 40 courses to complete, many combined degrees programs can be completed with 50 courses and you will graduate with not one but TWO distinct degrees.

<b>Bachelor of Science</b> (BASC, 40-course, or Second Degree)
Agricultural Biotechnology <sup>6</sup>
Agricultural Studies <sup>5,6</sup>
Applied Statistics <sup>6</sup>
Archaeology and Geography <sup>5</sup>
Biochemistry <sup>6</sup>
Biological Sciences <sup>6</sup>
Chemistry <sup>6</sup>
Computer Science <sup>3,6</sup>
Computer Science and Geographical Information Science <sup>6</sup>
Environmental Science <sup>6</sup>
General Major in the Sciences
Geography <sup>5,6</sup>
Kinesiology <sup>5,6</sup>
Mathematics <sup>6</sup>
Neuroscience <sup>6</sup>
Physics <sup>6</sup>
Psychology <sup>5</sup>
Remote Sensing <sup>6</sup>

<b>Combined Degrees*</b>
Bachelor of Arts / Bachelor of Education
Bachelor of Arts / Bachelor of Law (Bond University Australia)
Bachelor of Arts / Bachelor of Management
Bachelor of Fine Arts - Art / Bachelor of Education
Bachelor of Fine Arts - Dramatic Arts / Bachelor of Education
Bachelor of Fine Arts - New Media / Bachelor of Education
Bachelor of Fine Arts - New Media / Bachelor of Management
Bachelor of Fine Arts - New Media / Bachelor of Science (Computer Science)
Bachelor of Health Sciences / Bachelor of Management
Bachelor of Music / Bachelor of Education
Bachelor of Management / Bachelor of Education
Bachelor of Science / Bachelor of Education
Bachelor of Science / Bachelor of Management

\* Applicants must meet the admission requirements for each major within the combined degree.

<b>Pre-Professional Transfer Programs</b>
Engineering <sup>6</sup> (University of Alberta)
Dentistry (University of Alberta)
Journalism (University of Regina)
Law (University of Alberta)
Law (University of Calgary)
Medicine (University of Alberta)
Medicine (University of Calgary)
Social Work (University of Calgary)
Veterinary Medicine (University of Calgary)

- <sup>1</sup> Also available as a Bachelor of Science
- <sup>2</sup> Also available as a Bachelor of Fine Arts
- <sup>3</sup> Also available as a Bachelor of Management
- <sup>4</sup> Also available as a Bachelor of Music
- <sup>5</sup> Also available as a Bachelor of Arts
- <sup>6</sup> Additional requirements for entry into program
- <sup>7</sup> Admission GPA competitive
- <sup>8</sup> Requires Education 2500 plus 14 courses
- <sup>9</sup> Direct entry program
- <sup>10</sup> Pending government approval

For more information, scan QR code.



Questions? Contact Student Enrolment and Registrar Services at 403-320-5700 or [inquiries@uleth.ca](mailto:inquiries@uleth.ca).

<b>Diploma</b>
Finance <sup>6</sup>
Indigenous Governance and Business Management

<b>Certificate</b>
Arts and Science
Indigenous Student Success <sup>6</sup>

## Additional Requirements

Many of our programs have additional admission requirements that need to be met before you start your degree. To see if your program of interest has additional admission requirements, please visit: [ulethbridge.ca/ross/admissions/undergrad/additional-admission-requirements](http://ulethbridge.ca/ross/admissions/undergrad/additional-admission-requirements)

Our recruitment team is happy to help you navigate our programs, admission requirements and answer your questions about ULEthbridge! Contact [inquiries@uleth.ca](mailto:inquiries@uleth.ca).

# CANADIAN HIGH SCHOOL ADMISSION REQUIREMENTS

Province/ Territory	English	Language other than English <sup>2</sup>	Social Studies	Math (Algebra)	Math (Calculus)
<b>Alberta, N.W.T, Nunavut</b>	<ul style="list-style-type: none"> <li>English Language Arts 30-1</li> </ul>	<ul style="list-style-type: none"> <li>One or more distinct languages at the 30 level</li> </ul>	<ul style="list-style-type: none"> <li>Aboriginal Studies 30</li> <li>Social Studies 30-1</li> </ul>	<ul style="list-style-type: none"> <li>Mathematics 30-1</li> </ul>	<ul style="list-style-type: none"> <li>Mathematics 31</li> </ul>
<b>British Columbia / Yukon Territories</b>	<ul style="list-style-type: none"> <li>One of English 12 or English 12 First Peoples</li> </ul>	<ul style="list-style-type: none"> <li>One or more distinct languages at the 12 or 12A level</li> </ul>	<ul style="list-style-type: none"> <li>Human Geography 12 or Physical Geography 12</li> <li>BC First Peoples 12 or Contemporary Indigenous Studies 12</li> <li>Political Studies 12</li> <li>Law Studies 12</li> <li>Comparative Cultures 12</li> <li>Asian Studies 12</li> <li>20th Century World History 12</li> <li>Social Justice 12</li> </ul>	<ul style="list-style-type: none"> <li>Pre-Calculus 12</li> </ul>	<ul style="list-style-type: none"> <li>Calculus 12</li> </ul>
<b>Manitoba</b>	<ul style="list-style-type: none"> <li>One of ELA: Comprehensive Focus 40S or ELA: Literary Focus 40S or ELA: Transactional Focus 40S</li> </ul>	<ul style="list-style-type: none"> <li>One or more distinct languages at the 40S (min. 4 yr) level</li> </ul>	<ul style="list-style-type: none"> <li>History: Western Civilization 40S</li> <li>Global Issues 40S</li> <li>Geography: World Human 40S</li> <li>Current Topics in FNMI Studies 40S</li> </ul>	<ul style="list-style-type: none"> <li>Pre-Calculus Mathematics 40S</li> </ul>	<ul style="list-style-type: none"> <li>Advanced Mathematics 45S and Calculus 45S</li> </ul>
<b>New Brunswick</b>	<ul style="list-style-type: none"> <li>One of English 121 or 122</li> </ul>	<ul style="list-style-type: none"> <li>One or more distinct languages at the 121 or 122 level</li> </ul>	<ul style="list-style-type: none"> <li>Canadian Geography 120</li> <li>Canadian History 121</li> <li>World Issues 120</li> </ul>	<ul style="list-style-type: none"> <li>Pre-Calculus 120A and 120B</li> </ul>	<ul style="list-style-type: none"> <li>Calculus 120</li> </ul>
<b>Newfoundland and Labrador</b>	<ul style="list-style-type: none"> <li>English 3201</li> </ul>	<ul style="list-style-type: none"> <li>One or more distinct languages at the 3200 level</li> </ul>	<ul style="list-style-type: none"> <li>World Geography 3202 or 3208</li> <li>World History 3201 or Histoire Mondiale 3231</li> </ul>	<ul style="list-style-type: none"> <li>Mathematics 3200</li> </ul>	<ul style="list-style-type: none"> <li>Calculus 3208</li> </ul>
<b>Nova Scotia</b>	<ul style="list-style-type: none"> <li>One of English 12 (Academic), English 12 (Advanced), or English 12 African Heritage</li> </ul>	<ul style="list-style-type: none"> <li>One or more distinct languages at the 12 level</li> </ul>	<ul style="list-style-type: none"> <li>Global Geography 12</li> <li>Global History 12</li> <li>Global Politics 12</li> </ul>	<ul style="list-style-type: none"> <li>Pre-Calculus Mathematics 12</li> </ul>	<ul style="list-style-type: none"> <li>Calculus 12</li> </ul>
<b>Ontario</b>	<ul style="list-style-type: none"> <li>English 4U</li> <li>Studies in Lit 4U</li> <li>Anglais 4U</li> </ul>	<ul style="list-style-type: none"> <li>One or more distinct languages at the 4U, DU or NL5 level</li> </ul>	<ul style="list-style-type: none"> <li>CGU4U or CGW4U<sup>3</sup></li> <li>CHI4U or CHY4U<sup>3</sup></li> <li>CLN4U<sup>3</sup></li> <li>CPW4U<sup>3</sup></li> <li>NDW4M or NDG4M<sup>3</sup></li> </ul>	<ul style="list-style-type: none"> <li>Advanced Functions MHF4U</li> </ul>	<ul style="list-style-type: none"> <li>Calculus and Vectors MCV4U</li> </ul>
<b>Prince Edward Island</b>	<ul style="list-style-type: none"> <li>One of English 611A or 621A</li> </ul>	<ul style="list-style-type: none"> <li>One or more distinct languages at the 621 level</li> </ul>	<ul style="list-style-type: none"> <li>Geography 621A</li> <li>History 621A</li> </ul>	<ul style="list-style-type: none"> <li>Mathematics 621B</li> </ul>	<ul style="list-style-type: none"> <li>Mathematics 621B</li> </ul>
<b>Quebec</b> <small>Two CEGEP courses in English and eight other academic subjects. Maximum of two in each subject.</small>	<ul style="list-style-type: none"> <li>English Literature 603</li> </ul>	<ul style="list-style-type: none"> <li>One of Français 601 or French as a Second Language 602</li> <li>One or more distinct languages at the 607 to 616 level</li> </ul>	<ul style="list-style-type: none"> <li>Geography 320</li> <li>History 330</li> </ul>	<ul style="list-style-type: none"> <li>Linear Algebra 201-NYC</li> <li>Calculus I 201-NYA</li> <li>Calculus II 201-NYB</li> </ul>	<ul style="list-style-type: none"> <li>Calculus I 201-NYA</li> <li>Calculus II 201-NYB</li> </ul>
<b>Saskatchewan</b>	<ul style="list-style-type: none"> <li>English Language Arts A30/English Language Arts B30 (counts as one course)<sup>1</sup></li> </ul>	<ul style="list-style-type: none"> <li>One or more distinct languages at the 30 level</li> </ul>	<ul style="list-style-type: none"> <li>Geography 30</li> <li>History 30: Canadian Studies</li> <li>Native Studies 30: Canadian Studies</li> <li>Social Studies 30: Canadian Studies</li> </ul>	<ul style="list-style-type: none"> <li>Pre-Calculus 30</li> </ul>	<ul style="list-style-type: none"> <li>Calculus 30</li> </ul>

<sup>1</sup> Saskatchewan: Fransakois/Immersion students may use one of Français Fransakois A30 or B30 or Français Immersion in combination with either one of the English Language Arts courses. While either of Pre-Calculus 30 or Foundations of Mathematics 30 may be used as an academic course for admission, Pre-Calculus 30 is required as a prerequisite for courses in certain programs.

<sup>2</sup> Only one course in a particular language will be used for admission purposes, e.g., in Alberta, only one of French Language Arts 30-1 or French as a Second Language 30-3Y will be used.

<sup>3</sup> World Geography CGU4U or Canadian and World Issues CGW4U; History Identity &

Culture CHI4U or The West & the World CHY4U; Law CLN4U; Canadian & World Politics CPW4U; Aboriginal Issues in Global Context NDW4M or Aboriginal Gov. Emerging Direc NDG4M.

<sup>4</sup> Any distinct Fine Arts subject can be used as an approved course.

The following are the general admission requirements for applicants presenting credentials from Canadian high schools. Your published (final) Grade 11 grades will be used to determine conditional admission to ULEthbridge. Final Grade 12 grades will be reviewed and must meet admission requirements prior to the appropriate document deadlines. To ensure success in academic study, all applicants, regardless of citizenship or country of origin, must meet the English language proficiency (ELP) requirements through recognized study or a valid standardized test score.

Approved Grade 12 courses						One additional course
Math (Foundation)	Biology	Chemistry	Physics	Other Approved Subjects	Fine Arts <sup>4</sup>	
<ul style="list-style-type: none"> <li>Mathematics 30-2</li> </ul>	<ul style="list-style-type: none"> <li>Biology 30</li> </ul>	<ul style="list-style-type: none"> <li>Chemistry 30</li> </ul>	<ul style="list-style-type: none"> <li>Physics 30</li> </ul>	<ul style="list-style-type: none"> <li>Science 30</li> <li>Five credits in Advanced-level CTS Computer Science (CSE)</li> </ul>	<ul style="list-style-type: none"> <li>Art 30 or Art 31</li> <li>Dance 35</li> <li>Drama 30</li> <li>Choral Music 30, General Music 30, or Instrumental Music 30</li> </ul>	<ul style="list-style-type: none"> <li>Must be at the 30 level</li> <li>Must be worth at least five credits (multiple courses worth a total of five or more credits can be used)</li> <li>Cannot be a Special Project</li> </ul>
<ul style="list-style-type: none"> <li>Foundations of Mathematics 12</li> </ul>	<ul style="list-style-type: none"> <li>Anatomy &amp; Physiology 12</li> </ul>	<ul style="list-style-type: none"> <li>Chemistry 12</li> </ul>	<ul style="list-style-type: none"> <li>Physics 12</li> </ul>	<ul style="list-style-type: none"> <li>Composition 12, Creative Writing 12, New Media 12, Spoken Language 12, or Literary Studies 12</li> <li>Geometry 12</li> <li>Statistics 12</li> <li>Computer Science 12</li> <li>Environmental Science 12</li> <li>Specialized Science 12</li> <li>Economic Theory 12</li> <li>Geology 12</li> </ul>	<ul style="list-style-type: none"> <li>Studio Arts 3D 12, Studio Arts 2D 12, or Art Studio 12</li> <li>Dance Foundations 12, Dance Company 12, Dance Conditioning 12, or Dance Technique and Performance 12</li> <li>Drama 12</li> <li>Choral Music: Chamber Choir 12, Composition and Production 12, or Instrumental Music: Orchestra 12</li> </ul>	<ul style="list-style-type: none"> <li>Must be at the 12 level</li> <li>Must be worth at least four credits</li> </ul>
<ul style="list-style-type: none"> <li>Applied Mathematics 45S</li> </ul>	<ul style="list-style-type: none"> <li>Biology 40S</li> </ul>	<ul style="list-style-type: none"> <li>Chemistry 40S</li> </ul>	<ul style="list-style-type: none"> <li>Physics 40S</li> </ul>	<ul style="list-style-type: none"> <li>Computer Science 40S</li> <li>Interdisciplinary Topics in Science 40S</li> </ul>	<ul style="list-style-type: none"> <li>Drama 40S or 45S</li> <li>Music 40S or 45S</li> <li>Visual Arts 40S or 45S (maximum of one credit in each subject)</li> </ul>	<ul style="list-style-type: none"> <li>Must be at the 40 level</li> <li>Must be designated S,G, or U</li> <li>Must be worth at least one credit (two half-credit courses may be used)</li> </ul>
<ul style="list-style-type: none"> <li>Foundations of Mathematics 120</li> </ul>	<ul style="list-style-type: none"> <li>One of Biology 121 or 122</li> </ul>	<ul style="list-style-type: none"> <li>One of Chemistry 121 or 122</li> </ul>	<ul style="list-style-type: none"> <li>One of Physics 121 or 122</li> </ul>	<ul style="list-style-type: none"> <li>Intro to Environmental Studies 110</li> <li>Science 120</li> </ul>	<ul style="list-style-type: none"> <li>Music 120 or 122</li> <li>Theatre Arts 120</li> <li>Visual Arts 120 or Visual Arts Portfolio 122 or 3D Studies 120</li> </ul>	<ul style="list-style-type: none"> <li>Can be academic or non-academic</li> <li>Must be at the 120, 121, or 122 level</li> <li>Must be worth at least one credit</li> <li>Cannot be M, E, C or I</li> </ul>
<ul style="list-style-type: none"> <li>Mathematics 3201</li> </ul>	<ul style="list-style-type: none"> <li>Biology 3201</li> </ul>	<ul style="list-style-type: none"> <li>Chemistry 3202</li> </ul>	<ul style="list-style-type: none"> <li>Physics 3204</li> </ul>	<ul style="list-style-type: none"> <li>Earth Systems 3209</li> </ul>	<ul style="list-style-type: none"> <li>Art and Design 3200</li> <li>Applied Music 3206 or Ensemble Performance 3105</li> <li>Theatre Arts 3220 or Musical Theatre 3221</li> </ul>	<ul style="list-style-type: none"> <li>Must be at the 3000 level</li> <li>Must be worth at least two credits</li> </ul>
<ul style="list-style-type: none"> <li>Mathematics 12 (Advanced) or Math 12 (Academic)</li> </ul>	<ul style="list-style-type: none"> <li>Biology 12</li> </ul>	<ul style="list-style-type: none"> <li>Chemistry 12</li> </ul>	<ul style="list-style-type: none"> <li>Physics 12</li> </ul>	<ul style="list-style-type: none"> <li>Geology 12</li> </ul>	<ul style="list-style-type: none"> <li>Drama Theatre Arts 12 or Film and Video Production 12</li> <li>Music 12</li> <li>Visual Arts 12</li> </ul>	<ul style="list-style-type: none"> <li>Can be academic or non-academic</li> <li>Must be at the 12 level</li> <li>Must be worth at least one credit</li> </ul>
<ul style="list-style-type: none"> <li>Mathematics of Data Management MDM4U</li> <li>Math for College Technology MCT4C</li> <li>Foundations for College Math MAP4C</li> </ul>	<ul style="list-style-type: none"> <li>Biology SBI4U</li> </ul>	<ul style="list-style-type: none"> <li>Chemistry SCH4U</li> </ul>	<ul style="list-style-type: none"> <li>Physics SPH4U</li> </ul>	<ul style="list-style-type: none"> <li>Computer Science ICS4U</li> <li>Earth &amp; Space Science SES4U</li> <li>Science SNC4U</li> <li>Science SNC4U or SNC4M</li> </ul>	<ul style="list-style-type: none"> <li>Dance 4M</li> <li>Drama 4M</li> <li>Music 4M</li> <li>Visual Arts 4M</li> </ul>	<ul style="list-style-type: none"> <li>Must be designated as '4U' or '4M'</li> </ul>
<ul style="list-style-type: none"> <li>Mathematics 611A</li> </ul>	<ul style="list-style-type: none"> <li>Biology 621A</li> </ul>	<ul style="list-style-type: none"> <li>Chemistry 611A or Chemistry 621A</li> </ul>	<ul style="list-style-type: none"> <li>Physics 621A</li> </ul>	<ul style="list-style-type: none"> <li>Oceanography 621A</li> <li>Environmental Science 621A</li> </ul>	<ul style="list-style-type: none"> <li>Dramatic Arts 621A</li> <li>Music 621A</li> <li>Visual Arts 621A</li> </ul>	<ul style="list-style-type: none"> <li>Must be at the 600 level</li> <li>Must be worth at least one credit</li> </ul>
	<ul style="list-style-type: none"> <li>Biology 101</li> </ul>	<ul style="list-style-type: none"> <li>Chemistry 202</li> </ul>	<ul style="list-style-type: none"> <li>Physics 203</li> </ul>		<ul style="list-style-type: none"> <li>Art 520</li> <li>Drama 560</li> <li>Music 550</li> </ul>	<ul style="list-style-type: none"> <li>Not applicable</li> </ul>
<ul style="list-style-type: none"> <li>Foundations of Mathematics 30</li> </ul>	<ul style="list-style-type: none"> <li>Biology 30</li> </ul>	<ul style="list-style-type: none"> <li>Chemistry 30</li> </ul>	<ul style="list-style-type: none"> <li>Physics 30</li> </ul>	<ul style="list-style-type: none"> <li>Computer Science 30</li> <li>Earth Sciences 30</li> </ul>	<ul style="list-style-type: none"> <li>Arts Education 30 or Visual Art 30</li> <li>Dance 30</li> <li>Drama 30</li> <li>Band 30, Choral 30, or Instrumental Jazz 30</li> </ul>	<ul style="list-style-type: none"> <li>Must be at the 30 level</li> <li>Must be worth at least one credit</li> </ul>

# POST-SECONDARY TRANSFER STUDENTS

For admission to the University of Lethbridge as a post-secondary transfer student, most programs require an admission grade point average (GPA)\* of at least 2.0 on our 4.0 scale, although some programs may be competitive.

Depending on the number of transferable courses you have completed, we may also review your high school transcripts when considering your application for admission.

Individual courses may transfer as unspecified credit. Academic advisors can help decide how the credit can be applied to your specific program of study.

Students interested in transferring to ULethbridge should keep as much material from their courses as possible. Course outlines, textbook names and editions, and class notes could all be requested for the transfer credit assessment. For more information, please visit the transfer equivalencies database at:

**[ulethbridge.ca/ross/admissions/undergrad/transfer-credit](http://ulethbridge.ca/ross/admissions/undergrad/transfer-credit)**

Contact Admissions at 403-320-5700 or **[admissions@uleth.ca](mailto:admissions@uleth.ca)**

As a comprehensive university, ULethbridge offers a number of programs at the graduate level. If you are interested in learning more about our School of Graduate Studies, visit:

**[ulethbridge.ca/graduate-studies](http://ulethbridge.ca/graduate-studies)**

\* *GPA: Diploma GPA for diploma holders, Degree GPA for degree holders, or all transferable courses for other transfer applicants.*

Number of Transferable Courses	High School Transcript Required	Min. Average Required	Transferable Courses – GPA Required	Min. GPA Required*
1-5	Yes	65%	Yes	2.0
6+	Yes	N/A	Yes	2.0

\*\* Your high school marks are not used to decide your admission GPA but may be necessary for prerequisite programs. If you are unsure whether six of your courses will transfer, you should also arrange for your high school transcript to be sent to Admissions.

## Management Certificate

Finance <sup>1,2</sup>

General Management <sup>1</sup>

Human Resources Management and Labour Relations <sup>1,2</sup>

Indigenous Governance and Business Management

International Management

Marketing <sup>1,2</sup>

<sup>1</sup> Available at Lethbridge and Calgary campuses  
<sup>2</sup> Additional requirements for entry into program

## After Degree Programs

(Undergraduate degree required)

Bachelor of Education <sup>1,4,5</sup>

Bachelor of Health Sciences – Public Health <sup>2,5</sup>

Bachelor of Nursing <sup>1,4,5</sup>

Bachelor of Therapeutic Recreation <sup>3,4,5</sup>

Post-Bachelor Certificate in Accounting <sup>2</sup>

<sup>1</sup> Available at Lethbridge campus  
<sup>2</sup> Available at Lethbridge and Calgary campuses  
<sup>3</sup> Available at Lethbridge and Online campuses  
<sup>4</sup> Admission GPA competitive  
<sup>5</sup> Additional requirements for entry into the program



# INFORMATION FOR POST-DIPLOMA STUDENTS

Post-diploma programs build on the foundation you developed in your approved diploma program. Post-diploma degrees are typically 20 courses and consist of select upper-year courses in your subject area and courses to meet our liberal education requirements. To see if your diploma matches a post-diploma program at ULEthbridge, visit [ulethbridge.ca/postdiploma](http://ulethbridge.ca/postdiploma).

Some programs may be competitive or have additional admission requirements. If you think your program may align with a ULEthbridge degree, but you don't see your diploma on the list, please get in touch with Admissions at [admissions@uleth.ca](mailto:admissions@uleth.ca).

## Post-diploma Programs

Faculty of Health Sciences	Faculty of Arts & Science
Bachelor of Health Sciences - Addictions Counselling <sup>4</sup>	Bachelor of Arts or Bachelor of Science - Agricultural Studies
Bachelor of Health Sciences - Aboriginal Health <sup>4</sup>	Bachelor of Science - Computer Science
Bachelor of Health Sciences - Public Health <sup>1,4</sup>	Bachelor of Science - Environmental Science <sup>4</sup>
Bachelor of Therapeutic Recreation <sup>3,4</sup>	Bachelor of Science - Geography (with a concentration in GIS)
Dhillon School of Business <sup>2</sup>	Faculty of Fine Arts
Bachelor of Management - Accounting <sup>1</sup>	Bachelor of Fine Arts - Art (after two- or three-year diploma)
Bachelor of Management - Finance <sup>1</sup>	Bachelor of Fine Art - Dramatic Arts <sup>4</sup> (after two- or three-year diploma)
Bachelor of Management - Indigenous Governance and Business Management	Bachelor of Fine Arts - Multidisciplinary (after two- or three-year diploma)
Bachelor of Management - General Management <sup>1</sup>	Bachelor of Fine Arts - Art/BEd
Bachelor of Management - Human Resources Management and Labour Relations <sup>1</sup>	Bachelor of Fine Arts - Dramatic Arts/BEd <sup>4</sup>
Bachelor of Management - International Management <sup>1</sup>	Bachelor of Music <sup>4</sup>
Bachelor of Management - Marketing <sup>1</sup>	Bachelor of Music/Bachelor of Education <sup>4</sup>
Bachelor of Management - General Management /Bachelor of Education	

<sup>1</sup>Available at Lethbridge and Calgary campuses

<sup>2</sup>Available at Lethbridge and Online campuses

<sup>3</sup>Admission GPA competitive

<sup>4</sup>Additional requirements for entry into the program

# We can't wait to meet you!

We're excited to show you around campus and introduce you to our students, faculty and staff.

Let us know when you would like to visit. We will help you create a schedule for your visit and contact you with the details.

## Take a campus tour

One of our tour guides will show you around campus, highlighting ULethbridge's many features and facilities.



Can't make it to campus but still want a tour? Visit our virtual tour!

## Be a student-for-a-day

We will pair you with a student volunteer in the program you're interested in. You'll attend classes, labs and even go for lunch, our treat. Student-for-a-day is currently available on the Lethbridge campus only.



Scan the QR code to book your tour or student-for-a-day

## Book an enrolment advising appointment

Have all your questions about admission, programs and more answered in a one-on-one session in-person, over the phone, in your community or online.



You may also want to combine a meeting with a campus tour. Scan the QR code to book now.



# SEVEN

# 1



## Pick a program

We have 150+ programs to choose from.



## Apply online

It's easy! The cost to apply is \$140. Scan the QR code to submit your online application.

*Note: All completed applications submitted before December 15 will be considered for the Board of Governors' Admission Scholarship, worth up to \$1,000.*

# 5 STEPS TO APPLY



## Review admission requirements

Find out if you have the requirements for your program of choice.



## Check for additional program requirements

Some programs have requirements beyond our general admission requirements.



## Apply for residence!

Our residences are in high demand, so if you're interested, apply online asap!

**Want to live off-campus?  
Check out our off-campus housing website.**



## Apply for awards

We have several scholarships and awards with deadlines ranging from December 15 to June 30.



## Send us your grades

If you went to school in Alberta, we will get them automatically.

Questions? Contact  
[inquiries@uleth.ca](mailto:inquiries@uleth.ca)



# IMPORTANT DATES

September 1	Application for admission opens
September 15	Housing applications open <sup>1</sup>
October 21	Open House
November 1	Application deadline for spring term (Lethbridge Campus)
December 1	Application deadline for spring term (Calgary Campus)
December 15	Early admission deadline  Board of Governors' scholarship application deadline
February 1	Application deadline for the Faculty of Education
February 3	First round of auditions for Bachelor of Music (Music) and Bachelor of Music/Bachelor of Education applicants (fall term) <sup>2</sup>
March 1	Application deadline for the Bachelor of Nursing
March 9	Second round of auditions for Bachelor of Music (Music) and Bachelor of Music/Bachelor of Education applicants (fall term) <sup>2</sup>
March 15	High School awards application deadline <sup>1</sup>  Application deadline for Bachelor of Therapeutic Recreation
April 27	Third round of auditions for Bachelor of Music (Music) and Bachelor of Music/Bachelor of Education applicants (fall term)
June 1	Application deadline for Bachelor of Health Sciences
June 15	Application deadline for international students Application deadline for Bachelor of Music  Transfer Awards deadline <sup>1</sup>
June 30	General application deadline (Lethbridge Campus)  Grade 11 Merit Award deadline
August 1	Application deadline (Calgary Campus)

For a complete list of dates and deadlines, please visit:

**[ulethbridge.ca/future-student/application-dates-and-deadlines](http://ulethbridge.ca/future-student/application-dates-and-deadlines)**

<sup>1</sup>To apply for housing and awards, students must have submitted an application for admission and been issued a ULethbridge ID number

<sup>2</sup>Scholarship consideration

